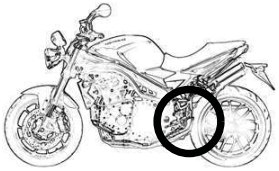


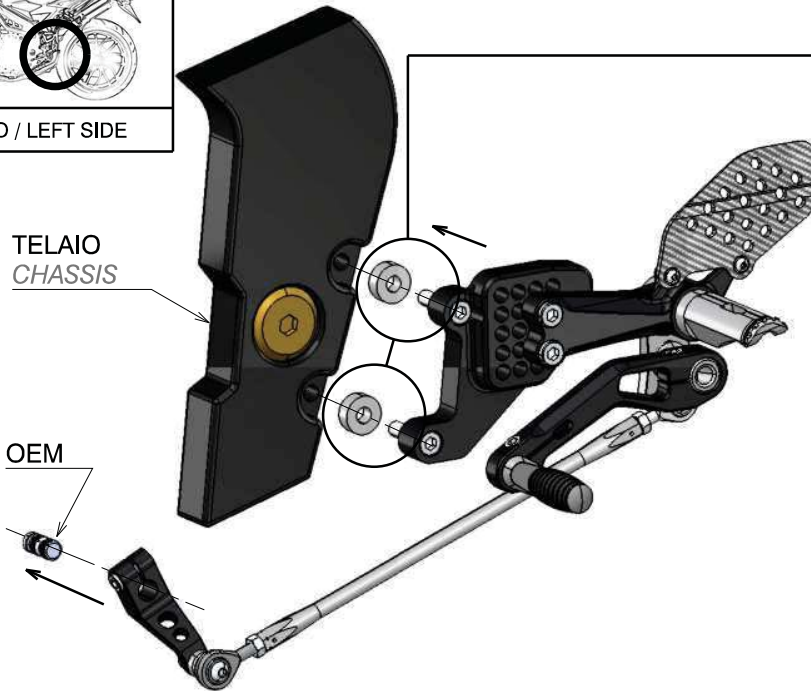
PART NUMBER:
PE450

NAME:
KIT COMANDI ARRETRATI
REAR SET CONTROL KIT

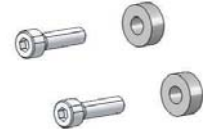
MOUNTING INSTRUCTION - ISTRUZIONI DI MONTAGGIO
MONTAGEANLEITUNG - INSTRUCTIONS DE MONTAGE
INSTRUCCIONES DE MONTAJE



LATO SINISTRO / LEFT SIDE



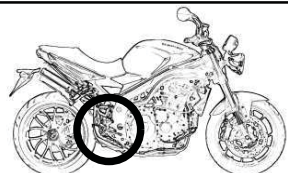
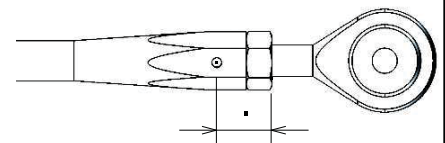
PER TRIUMPH SPEED TRIPLE 2002-2007
USARE VITE M8X30 E BOCCOLE
FOR TRIUMPH SPEED TRIPLE 2002-2007
USE SCREW M8X30 AND SPACERS



PER TRIUMPH SPEED TRIPLE 2008 ->
USARE VITE M8X25 SENZA BOCCOLE
FOR TRIUMPH SPEED TRIPLE 2002-2007
USE SCREW M8X25 AND DO NOT USE
SPACERS



DISTANZA MINIMA DI SICUREZZA
MAX LENGHT EXIT



LATO DESTRO / RIGHT SIDE

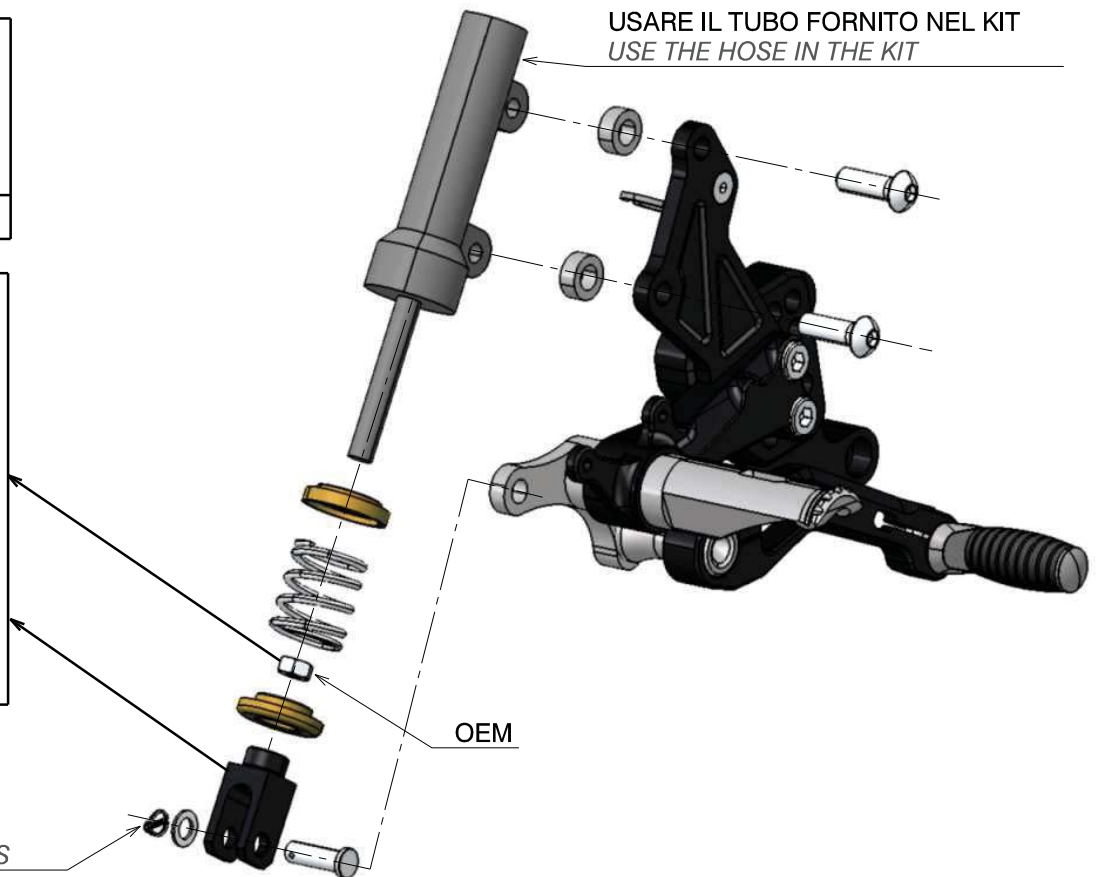
USARE IL TUBO FORNITO NEL KIT
USE THE HOSE IN THE KIT

ATTENZIONE

ATTENTION
STRINGERE LA FORCHETTA CON IL DADO
BLOCK THE FORK WITH THE NUT



FERMARE LA COPIGLIA
PIEGANDONE I LEMBI
BLOCK THE SAFETY PIN
FOLDING ITS BOTH EDGES



OEM : Original Equipment Manufacturer

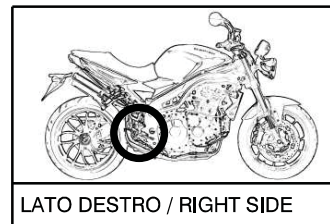
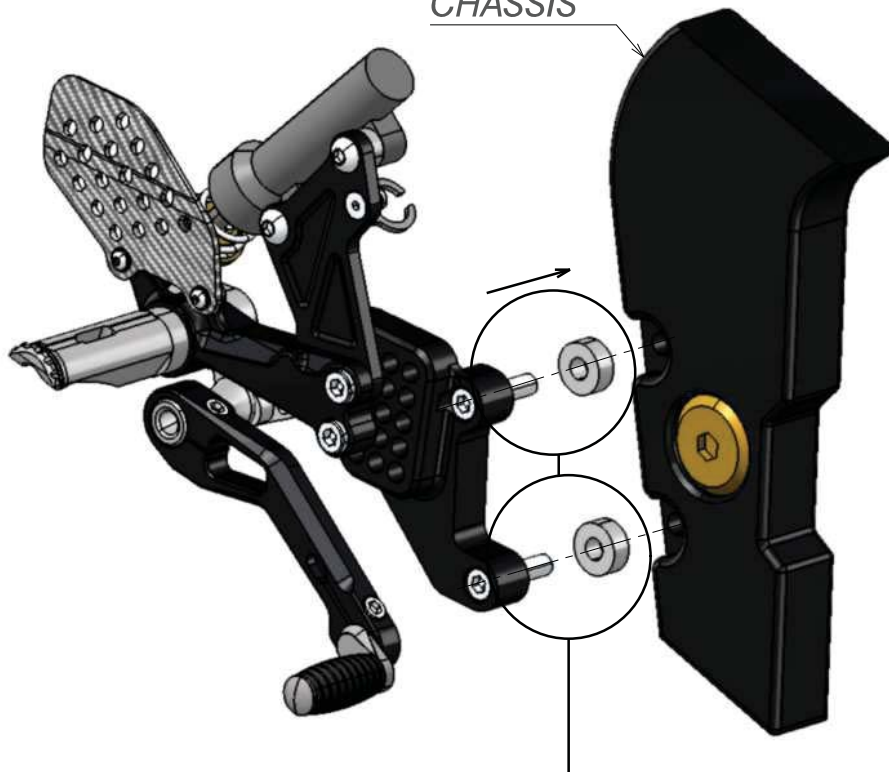
PART NUMBER:
PE450

NAME:
KIT COMANDI ARRETRATI
REAR SET CONTROL KIT

MOUNTING INSTRUCTION - ISTRUZIONI DI MONTAGGIO
MONTAGEANLEITUNG - INSTRUCTIONS DE MONTAGE
INSTRUCCIONES DE MONTAJE

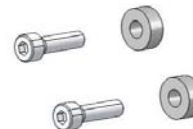


TELAIO
CHASSIS



LATO DESTRO / RIGHT SIDE

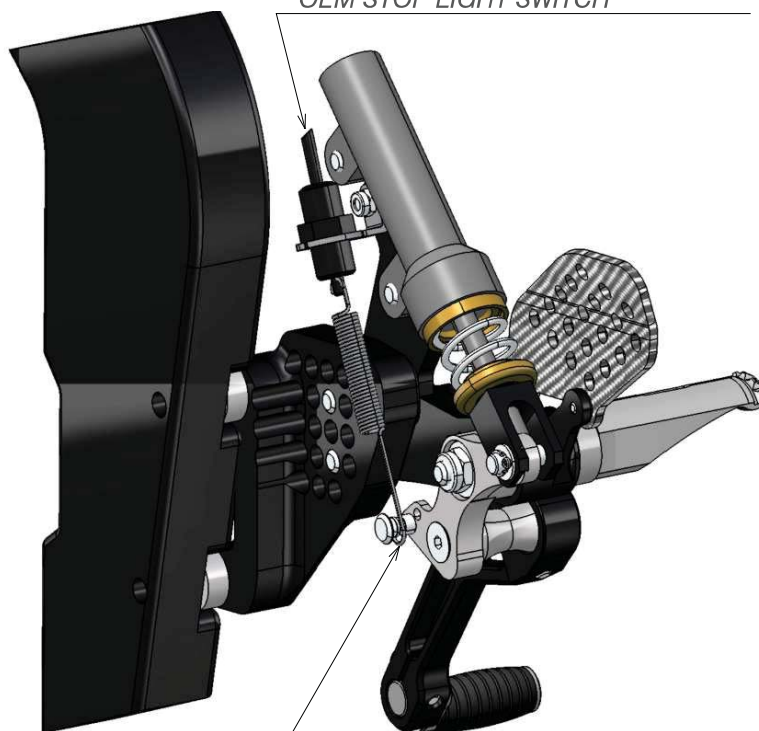
PER TRIUMPH SPEED TRIPLE 2002-2007
USARE VITE M8X30 E BOCCOLE
FOR TRIUMPH SPEED TRIPLE 2002-2007
USE SCREW M8X30 AND SPACERS



PER TRIUMPH SPEED TRIPLE 2008 ->
USARE VITE M8X25 SENZA BOCCOLE
FOR TRIUMPH SPEED TRIPLE 2002-2007
USE SCREW M8X25 AND DO NOT USE
SPACERS



INTERRUTTORE LUCE STOP OEM
OEM STOP LIGHT SWITCH



MOLLA
SPRING

OEM : Original Equipment Manufacturer